



# St. Barnabas 'Little Stars' Nursery Class

'Where your little stars come to shine'

## We think this is really important ...

Our values sit at the heart of all we do. St Barnabas is proud of its committed team of people who all share in a core value – to provide high quality education in a caring, Christian environment. We pride ourselves on creating a stimulating and nurturing school, where all children are valued. Our nursery is an excellent complement to our setting and our Little Stars class will be an integral part of Team Barnabas!

We have high expectations for our young people, encouraging them to be aspirational and providing them with the skills they need to be successful in their future lives. We endeavour to deliver a positive and stimulating approach to learning that fosters a child's confidence, happiness and nurtures self-belief. By working together with our parents, we are confident our learners will achieve great things.



## **Our Nursery's Ethos:**

St Barnabas 'Little Stars' nursery class is part of a happy, secure and caring school, which aims to provide the highest quality education and care. We are an inclusive setting where all children and adults respect each other, and grow together in order to reach their full potential. Our children love to learn, and our dedicated nursery teachers provide an inspiring environment where all children learn through play. We have high expectations of each child's ability to learn, and model expected behaviours to encourage the children to be the best they can be. Alongside our effective partnerships with parents, we aim to provide, a safe, secure and stimulating environment. We believe children learn in an integrated way, and we support this, through child-initiated and play based adult-led activities. These opportunities provide an excellent contribution to each child's early development, stimulating their enthusiasm and imagination, developing a positive attitude to learning.

## **Why choose St Barnabas 'Little Stars' Nursery Class?**

**Staff-** Qualified teacher and experienced staff delivering exceptional learning experiences.

**Transition-** Excellent transition arrangements, for a seamless progression into school.

**Achievement-** A wonderful broad and balanced curriculum, which sparks curiosity and enthusiasm, so all children can achieve and develop a love of learning.

**Resources-** From our forest school area to our library, we have extensive resources and facilities, due to being part of a wider school community.

**Supportive-** Supports your childcare needs, by providing a high quality, affordable and an inclusive learning environment for your child. We also support your child in becoming an independent and confident lifelong learner.

## **Session information:**

Sessions are as follows:

- 8:30-11:30 (Morning session, £12)
- 8:30-12:30 (Morning session with lunch club, £16)
- 12:30-3:30 (Afternoon session, £12)
- 8:30-3:30 (Morning and Afternoon session, with lunch club, £28)

Government funded 15/30 hours, funded hours can be used towards any session. However you cannot claim the funded hours over our 'lunch club' hour. There will be a £4 charge, if your child attends the nursery between 11:30 & 12:30pm.

### ***Lunch Club: (11:30am – 12:30pm) £4 for the lunch hour.***

Children can either: bring their own lunch in a labelled lunch box (which is transferred onto a plate), or purchase a hot meal from the school kitchen for £2. Tables are prepared for a 'meal together'. A member of our staff will sit at the table during lunch, promoting table manners and encouraging independence. Lunch is not hurried, the children then sit down on the carpet and listen to a story afterwards.

- Nursery class fees are payable one term in advance, and are non-refundable if your child fails to attend.
- We require each child to attend a minimum of 10 hours per week.
- There is a registration fee of £30 to be paid by all parents on enrolling your child in the nursery class. This ensures a space is kept available for your child. Please complete and return the attached registration form to enrol your child.

## **Extended Services:**

### ***Breakfast Club: (7:30 – 8:30am) £5 per session.***

Children arrive and eat breakfast together, in the main school hall. Then at 8:00 are taken across to the nursery class, where they share a story with an adult and prepare for the day ahead.

### ***The Zone Out of School Club: (3:30 - 6:00pm)***

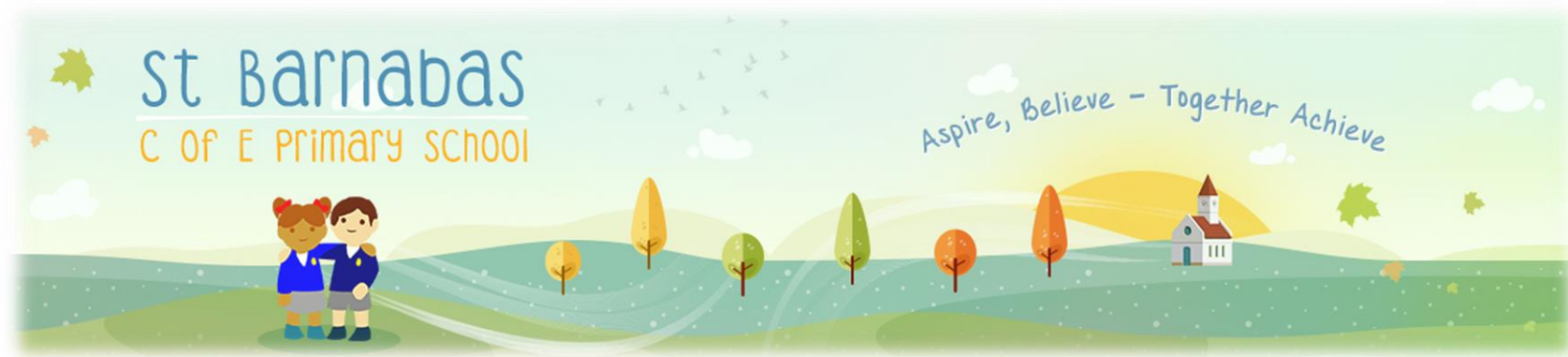
Privately owned, and run in the nursery classroom. 'The Zone' Out of School Club is Ofsted registered and situated in a classroom at St Barnabas Primary School, which caters for all children aged 3-11 years. Their aim is to provide a welcoming, enjoyable, fun and safe place where the children can come and play, relax, join in with activities and socialise with friends. If you would like to enquire then please contact: [office@thezone1.co.uk](mailto:office@thezone1.co.uk)

## Visits & Registration:

If you would like to visit our nursery class, please call: 01454 862478/ 862233 or email: [nursery@stbarnabasprimaryschool.co.uk](mailto:nursery@stbarnabasprimaryschool.co.uk) to arrange a convenient time for you.

If you would like to register your child for our nursery class, please complete the attached registration form, and return to [nursery@stbarnabasprimaryschool.co.uk](mailto:nursery@stbarnabasprimaryschool.co.uk) or send a paper copy to our school office Poplar Road, North Common, Warmley, BS30 5NW. Other enquires can be made by phoning 01454 862478/ 862233

**We look forward to meeting you!**



Learn more about St. Barnabas CE Primary School and Nursery class by visiting our website [www.stbarnabasprimaryschool.co.uk](http://www.stbarnabasprimaryschool.co.uk), and clicking on the Nursery tab.

## **Admissions, charges and allocations criteria:**

### ADMISSIONS AND ALLOCATIONS

1. Families who choose to use their full 15 or 30 hours funding entitlement directly with us will be given priority.
2. The government do not allow the funding to be used for food or drink, therefore we have applied a charge to sessions including breakfast and lunch.
3. All government funded hours will be allocated on a first come first serve basis.
4. In an oversubscribed situation, families who have siblings at St. Barnabas CE Primary School will be given priority.
5. The nursery class will run term time only.
6. Parents must apply each term for their additional 15/30 hours of grant funding. If the funding is withdrawn you will be charged by the school.
7. Children are required to attend a minimum of 10 hours per week.

### CHARGES

1. There is a registration fee of £30 to be paid directly to the school when enrolling your child in the nursery class.
2. Fees are payable one term in advance and are not refundable if your child/children fail to attend.
3. If changes are made to sessions after the organisation of the term has been set, an administration charge of £10 may be applied.

All children are eligible for a grant the term following their third birthday.

The nursery class also accepts children who have been awarded the 2 year old funding.

Further T&Cs can be found in our Nursery Policy, if you would like to view this we can provide you with a copy when you visit us.